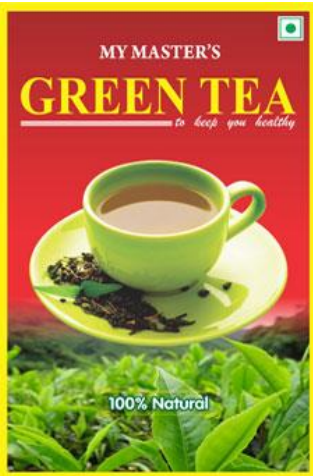




# STAR Plan

On purchasing **2 My Master's Green Tea** packets(150 grams each) with **Rs.750/-**

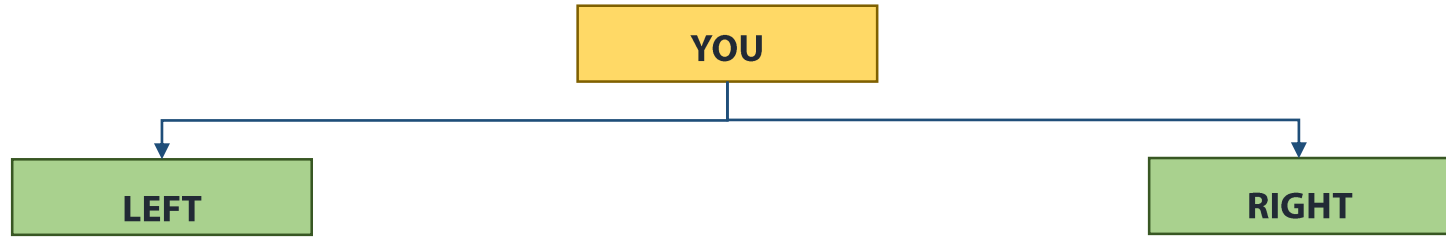


You'll get

**My Master's** Exclusive merchant software in [www.mymasterfamily.com](http://www.mymasterfamily.com)

+

**Eligibility to register** in [www.alwaysvictory.com](http://www.alwaysvictory.com)

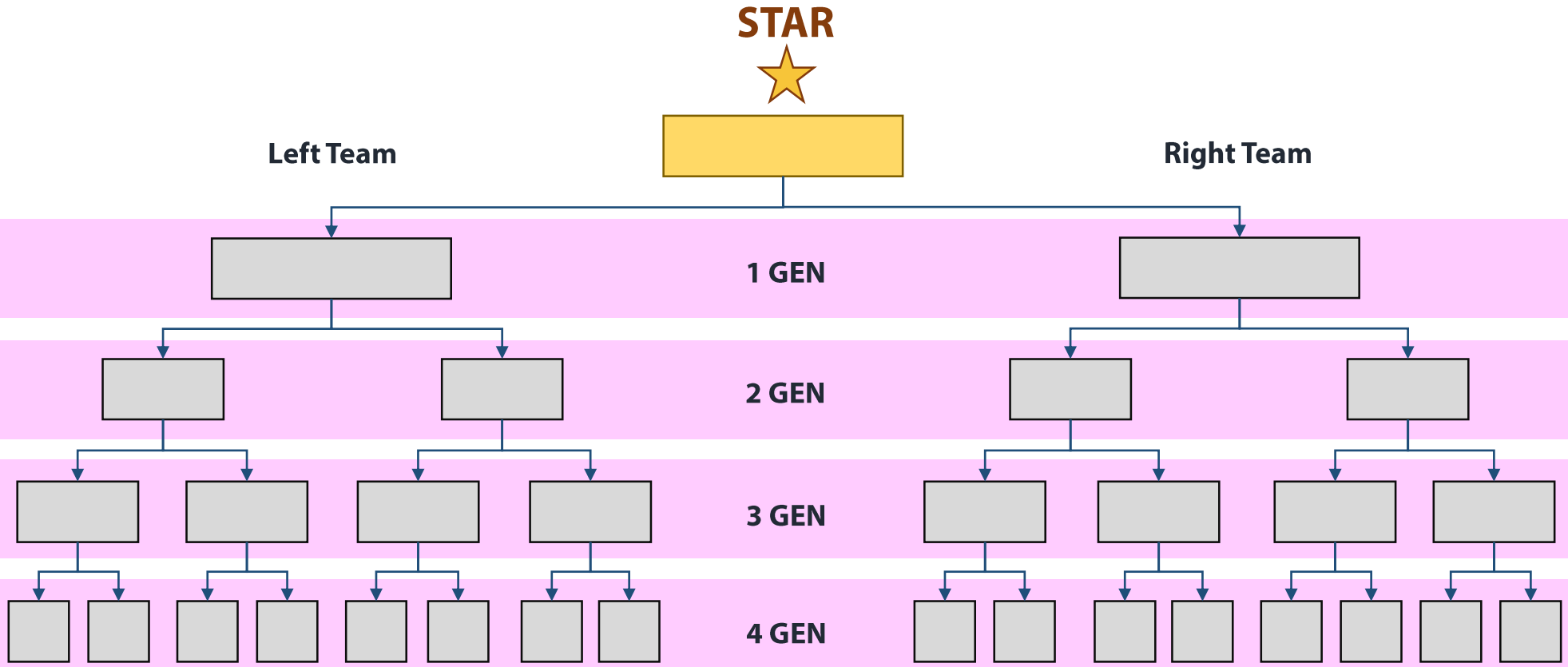


**1** sale from left team and **1** sale from right team in one generation (level) = **1 set**

**2** Direct sales(1 left and 1 right)are must to get all '**STAR**' incomes



# STAR Plan



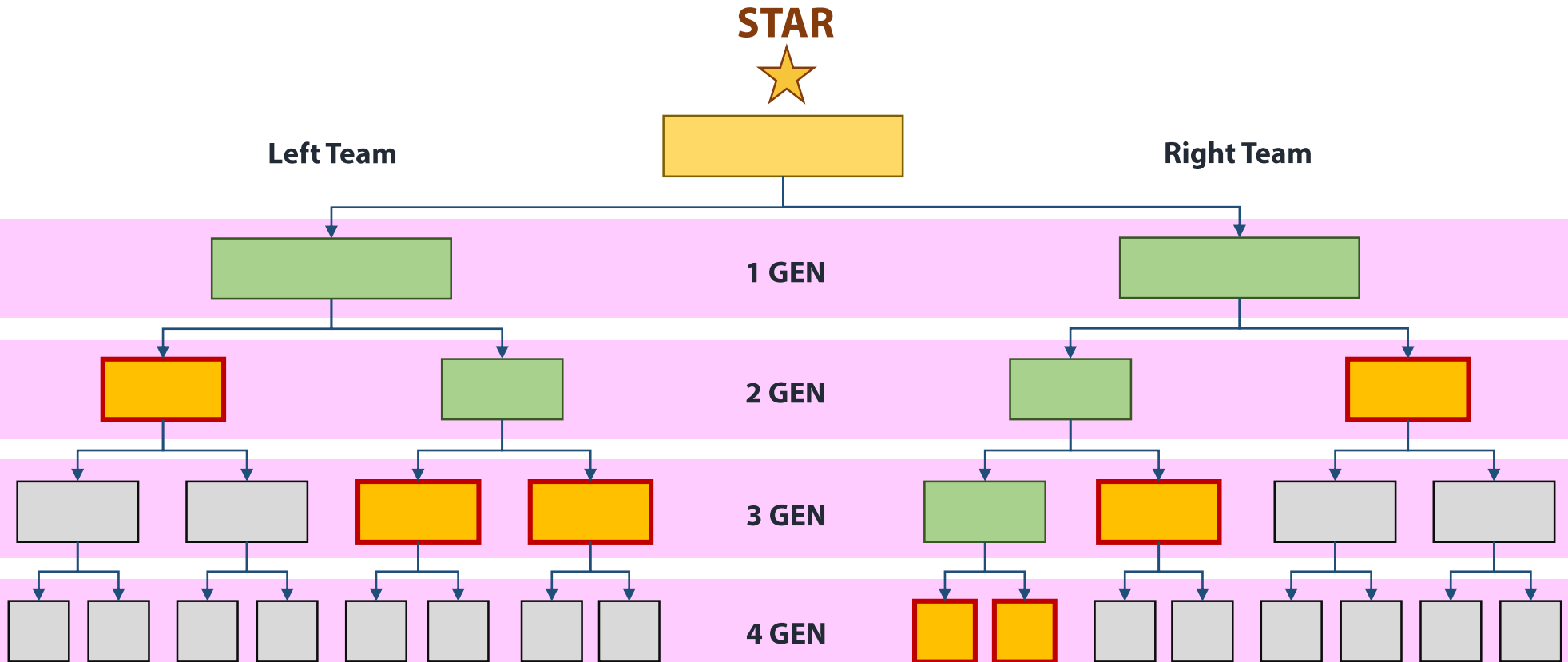
And the generations continue to unlimited depth

 **Vacant**



# STAR Plan

A new member can be registered at any position available to the sponsorer



And the generations continue to unlimited depth

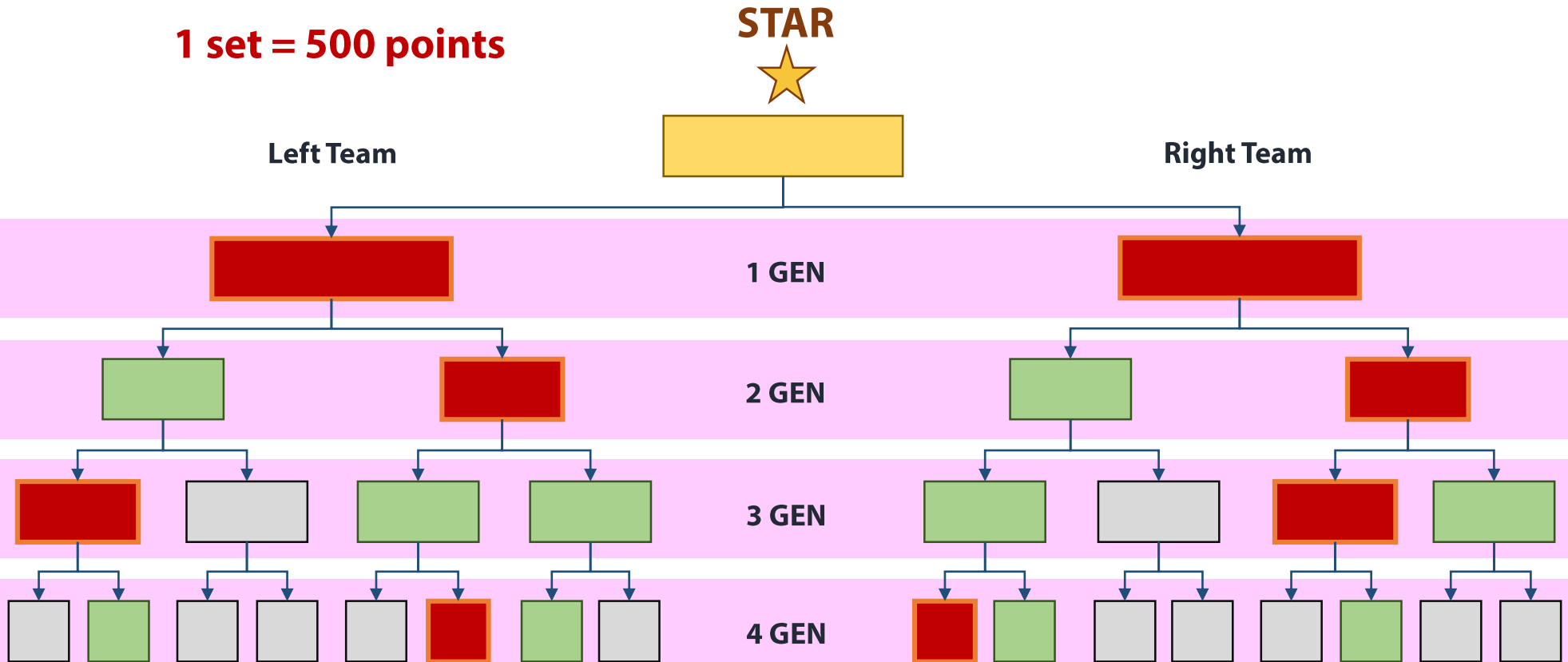
No points    Available positions for a new registration    Vacant



# STAR Plan

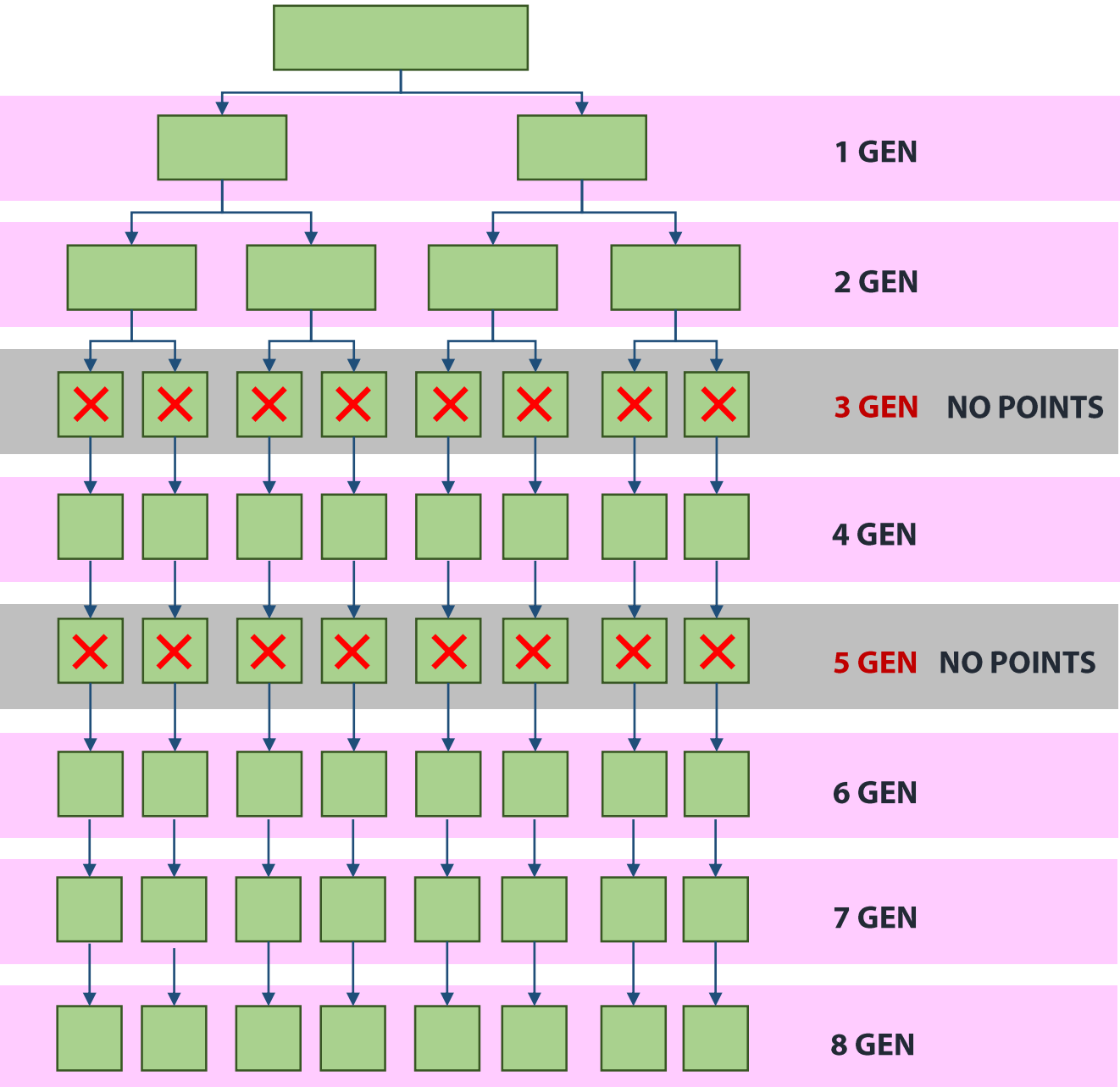
From each generation only **1 SET** will be considered and points will be allocated accordingly

**1 set = 500 points**



And the generations continue to unlimited depth

No points Paired Vacant



**3<sup>rd</sup> & 5<sup>th</sup>** generations have no points allocation, instead will be promoted to next

**STAR**



Standard Deductions

TDS + Maintenance : 20%

**Weekly Pay-out**

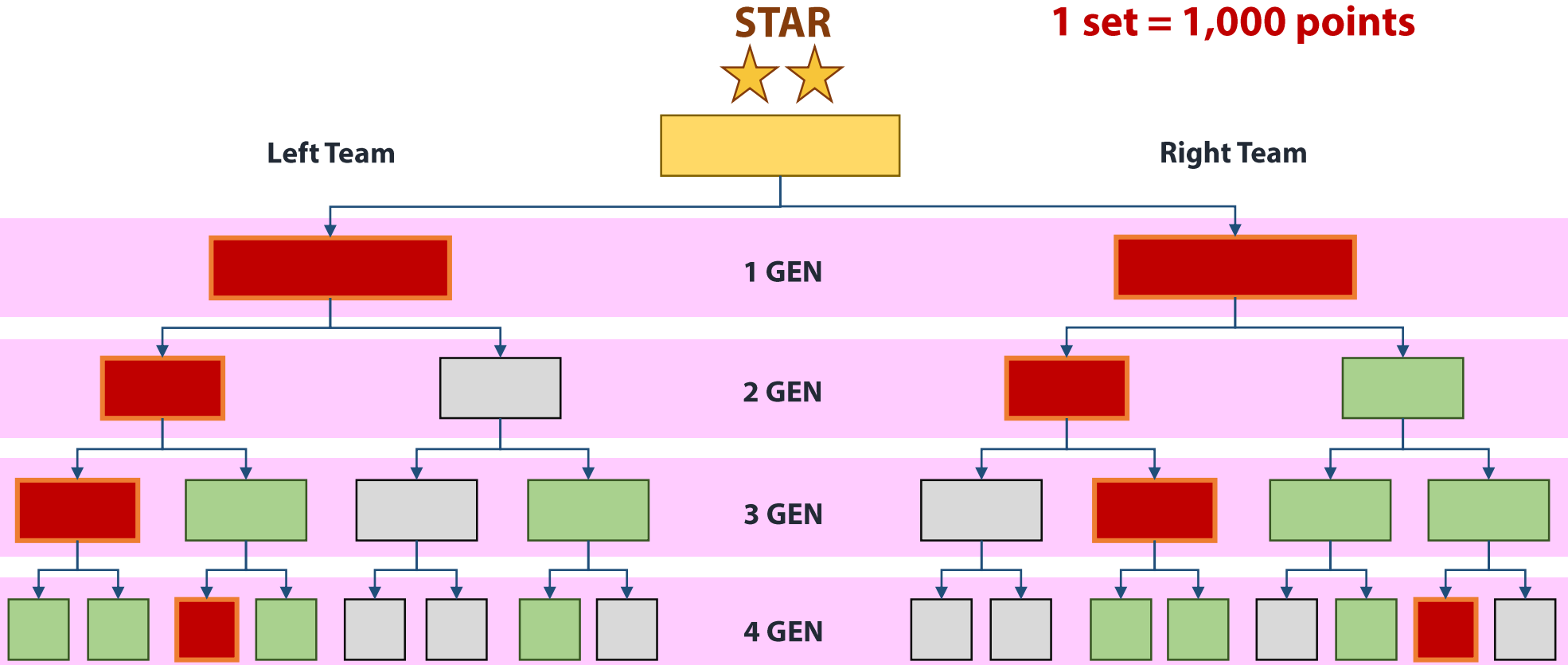
(on every Thursday)

No capping, No tail, No trimming



# STAR Plan

1 set = 1,000 points



And the generations continue to unlimited depth

 No points     Paired     Vacant



**3<sup>rd</sup> & 5<sup>th</sup>** set have no points allocation, instead will be promoted to next

**STAR**

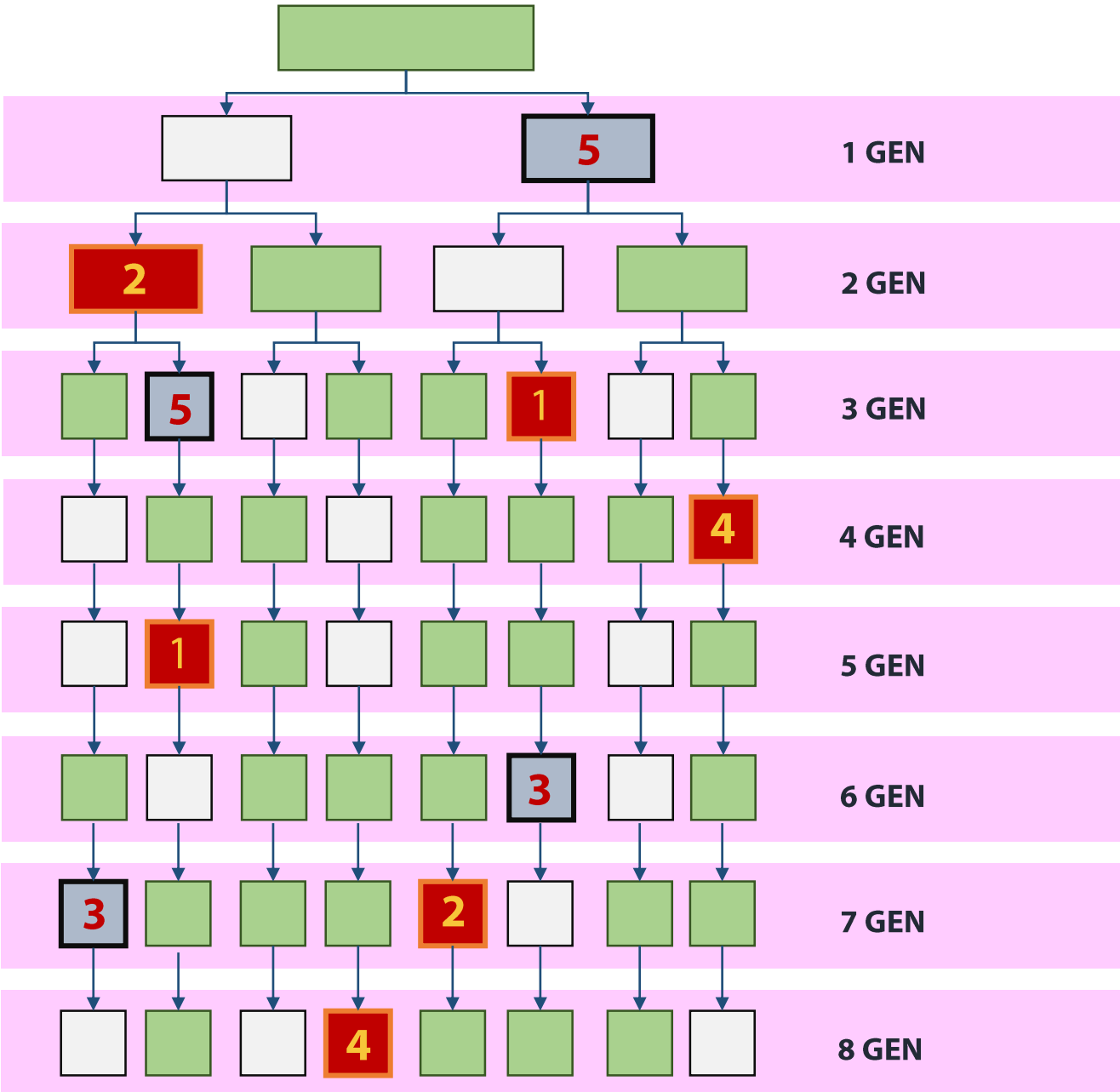


No points

Paired

Vacant

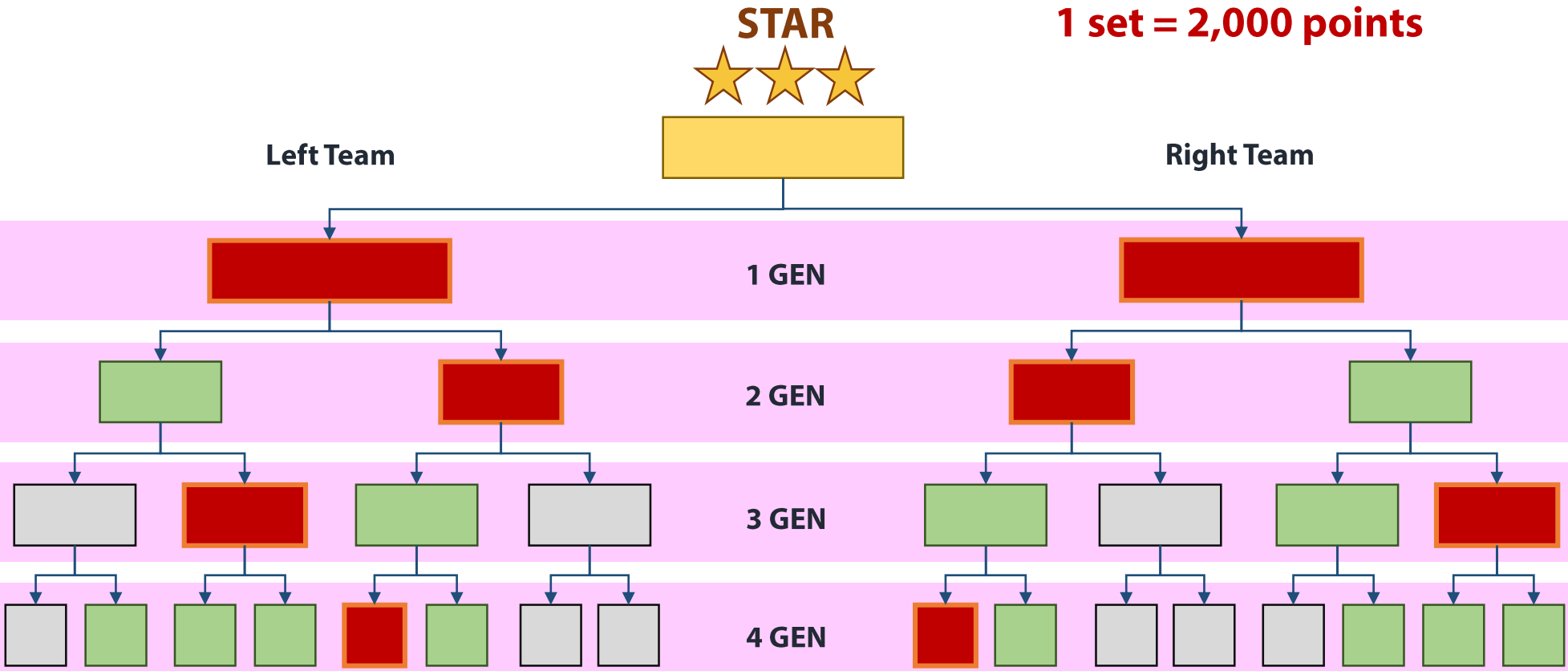
**The set which comes first will be paired, irrespective of the generations**





# STAR Plan

1 set = 2,000 points



And the generations continue to unlimited depth

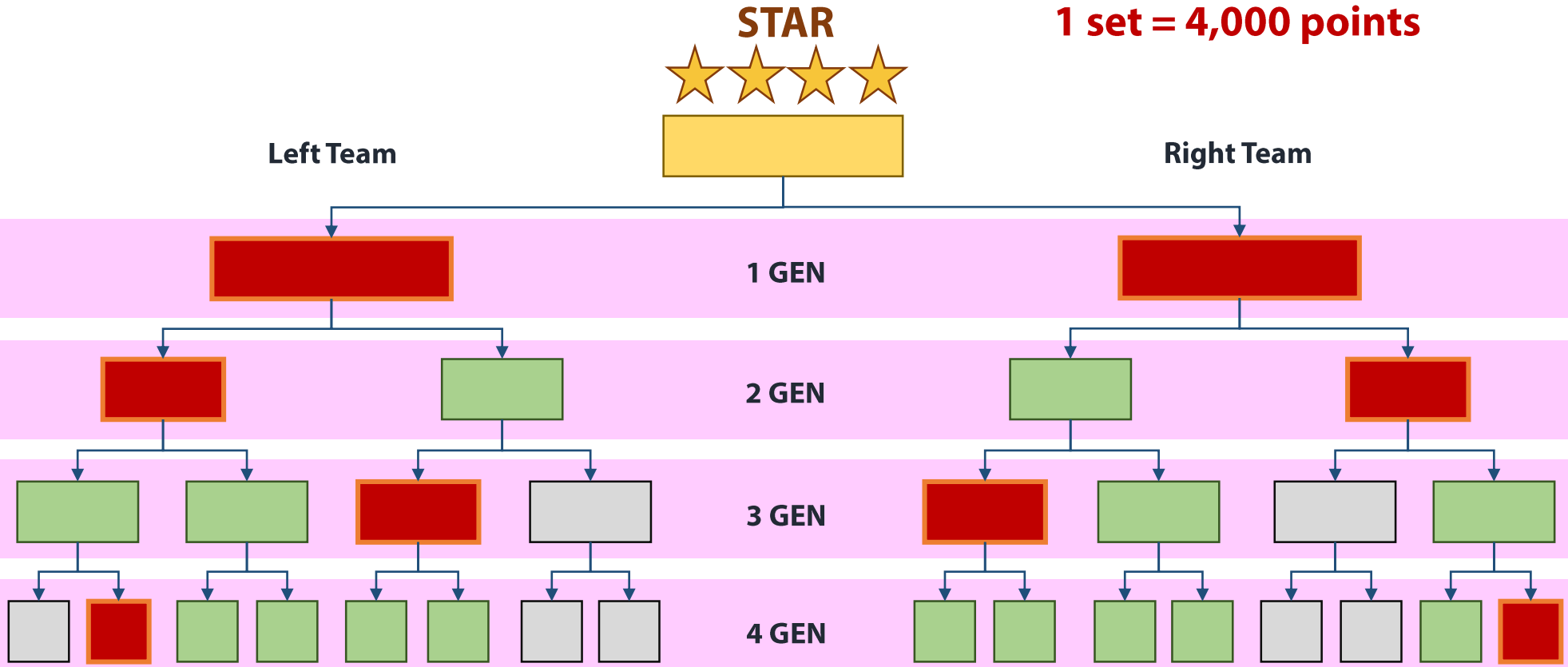
Green box: No points    Red box: Paired    Grey box: Vacant





# STAR Plan

1 set = 4,000 points



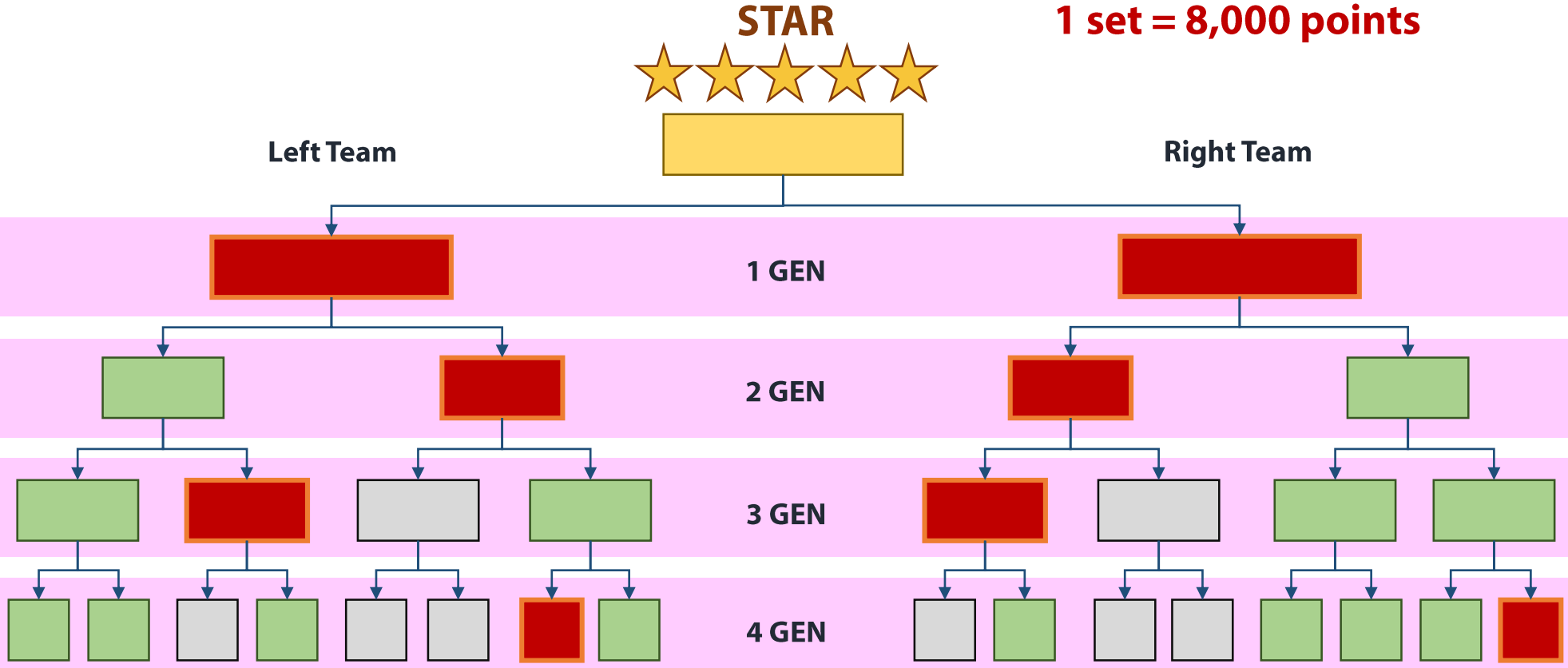
And the generations continue to unlimited depth

No points    Paired    Vacant



# STAR Plan

1 set = 8,000 points



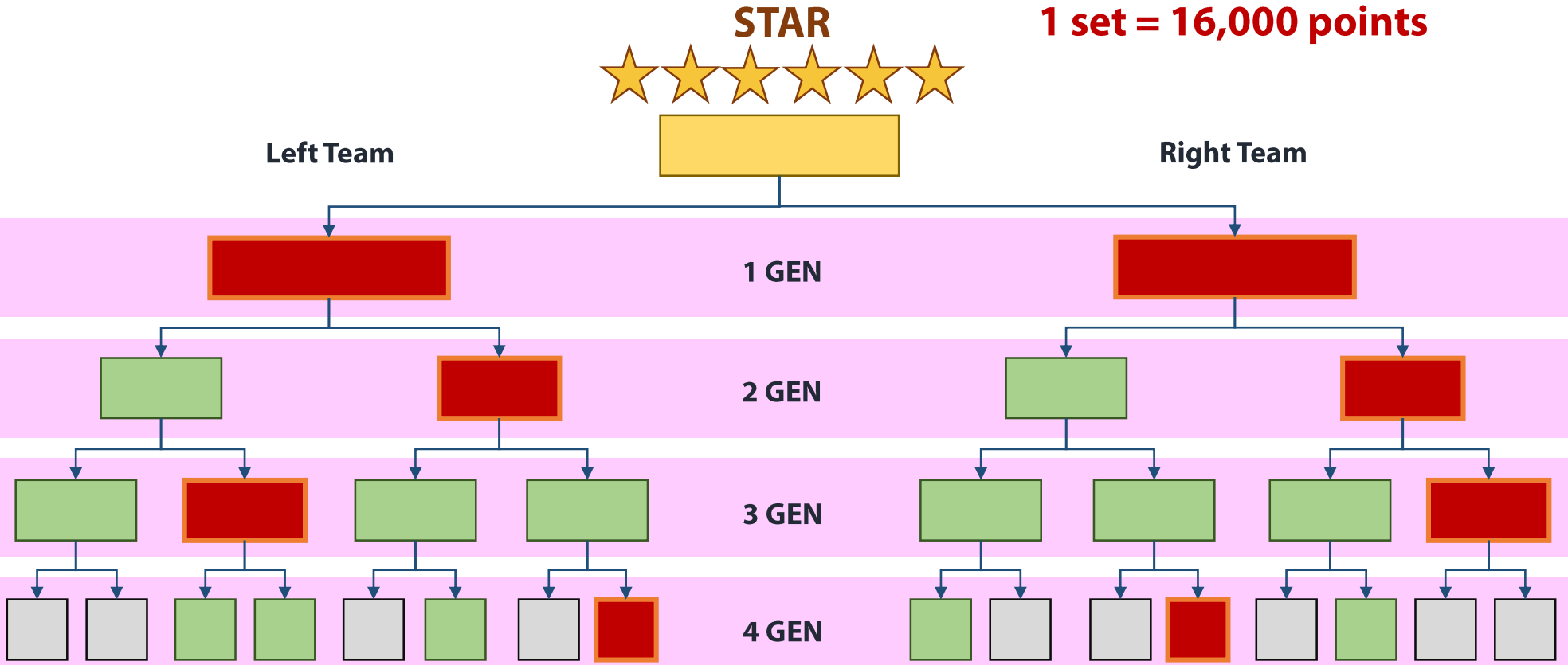
And the generations continue to unlimited depth

No points
  Paired
  Vacant



# STAR Plan

1 set = 16,000 points

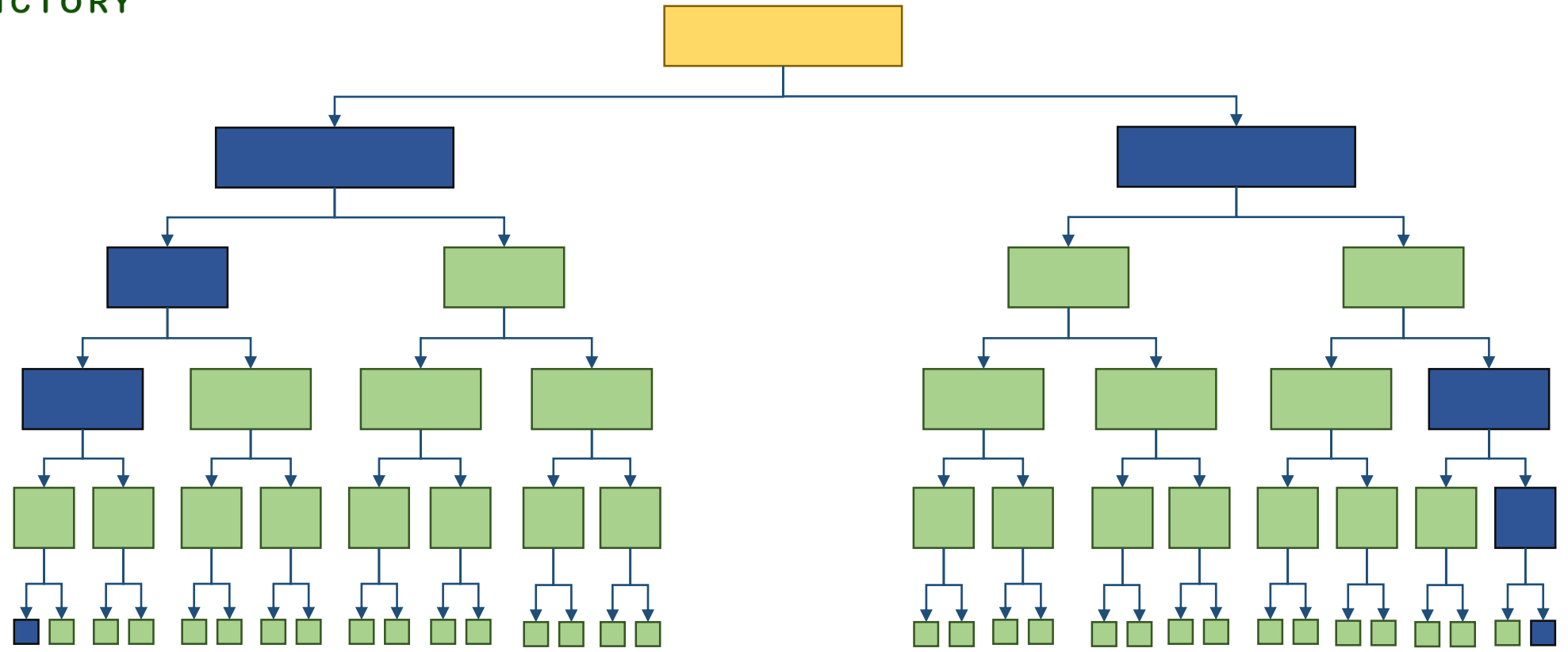


And the generations continue to unlimited depth

No points    Paired    Vacant

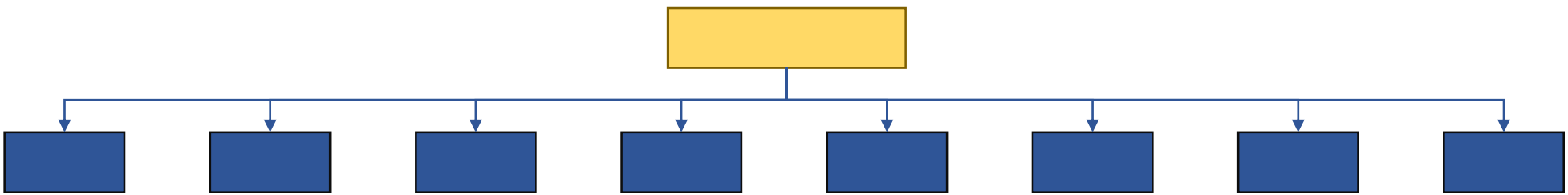


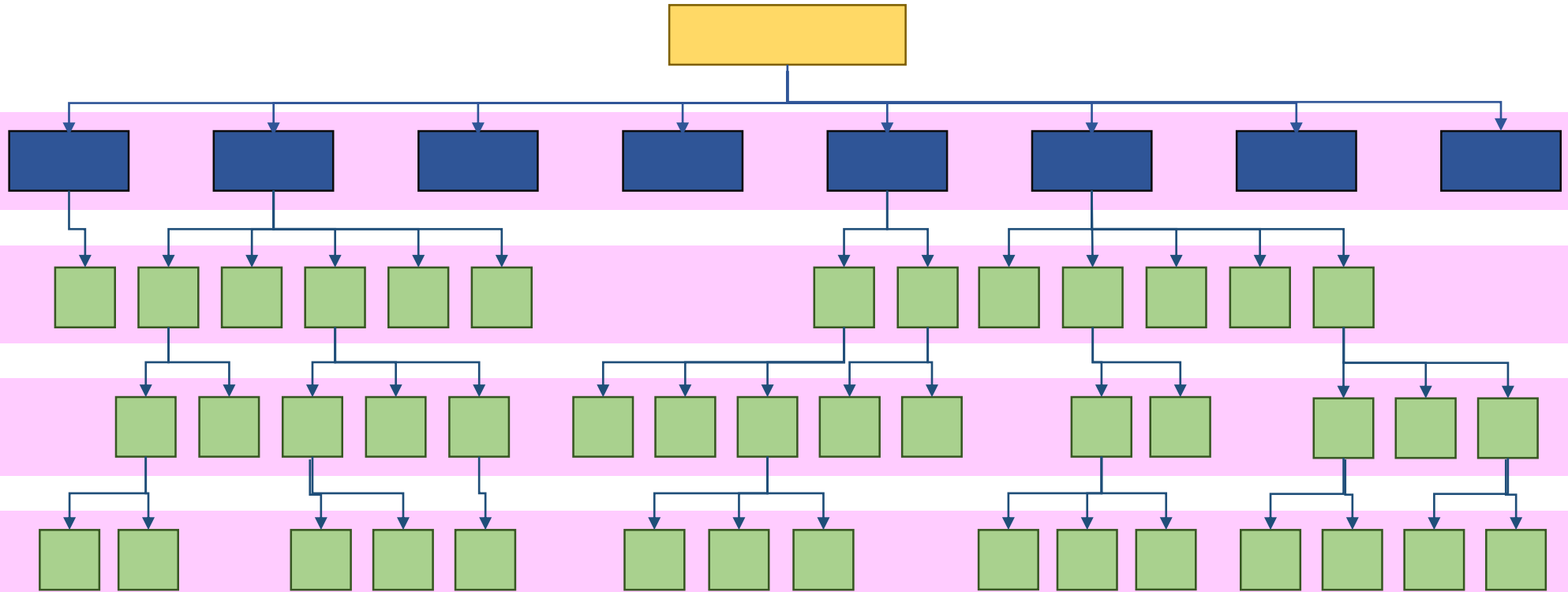
# Re-Purchase Plan



 Direct referrals

Your direct referrals are in 1<sup>st</sup> level in **Repurchase plan**



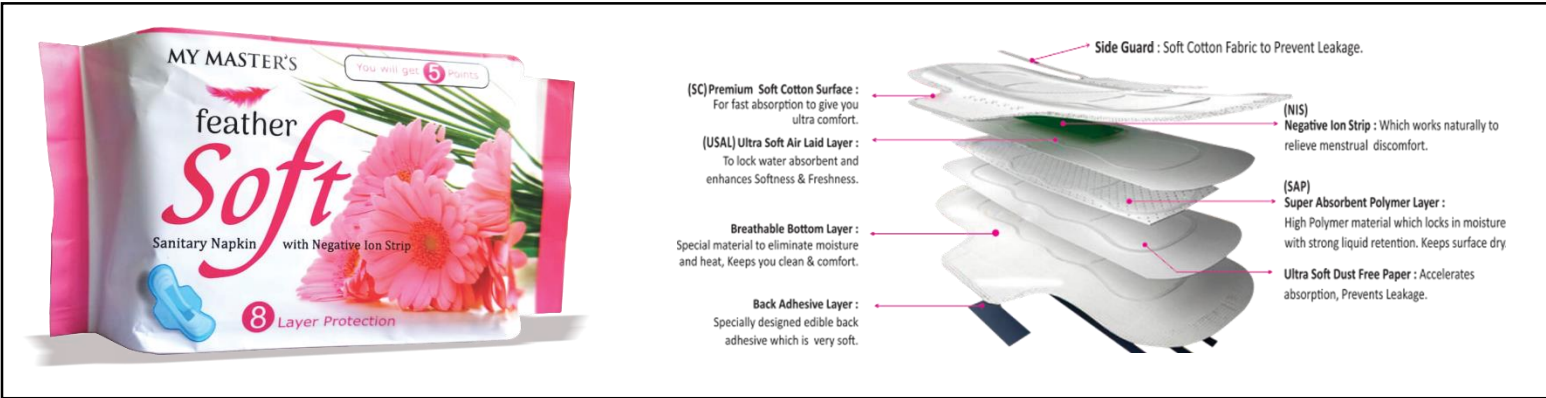


And the levels continue to unlimited depth

Based on the purchases done by team-mates **Level points** will be allocated accordingly



# Re-purchase Products



**MRP : Rs.80/-**  
**Point Distribution**  
**5 points** for each level  
**Customer +**  
**3 level up-liners**

## My Master's Feather Soft Sanitary Napkin



**My Master's**  
**Premium Quality Tea**  
**250gms**  
**+**  
**75gms Lemon Tea**

**MRP : Rs.140/-**  
**Point Distribution**  
**5 points** for each level  
**Customer +**  
**3 level up-liners**